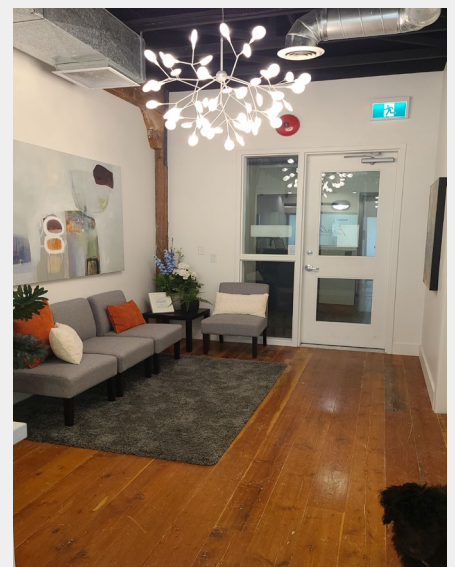




Opportunity Features

A keystone in Kelowna's Downtown Cultural District. 'The Core On Ellis' is a centre for health care, engineering and technology. Initially built in the early 1900's as a cold storage building for the fruit packing industry, this heritage building was modernized entirely and stratified in 2006. This 2,325 square foot NE corner loft style unit is located on the 3rd floor offering a wall of windows along the Ellis Street front, heritage wood plank flooring, post & beam construction elements and includes an exclusive ~300 SF roof top deck for social gatherings. Four reserved and transferrable parking stalls contracted with City of Kelowna within adjacent Library parkade.

PRICE: \$1,279,000.00 MLS 10241987

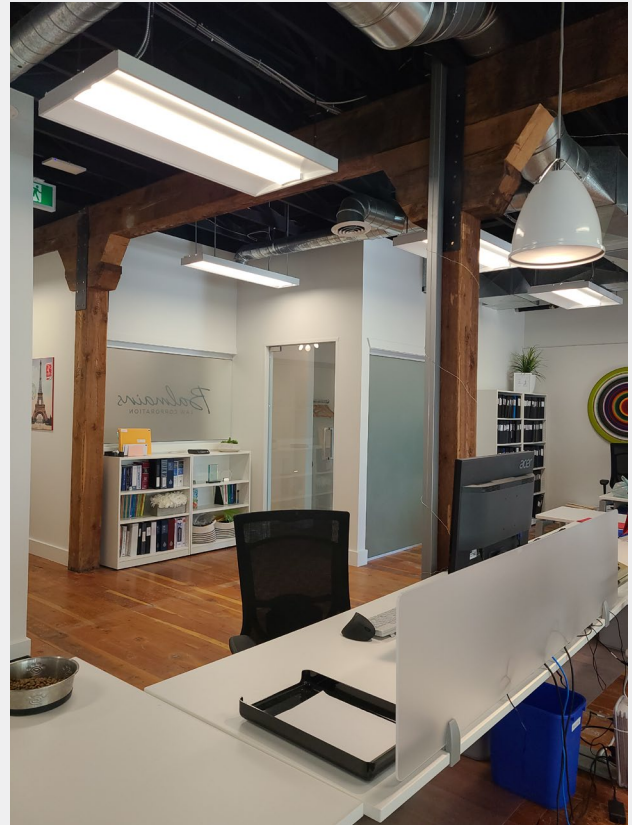
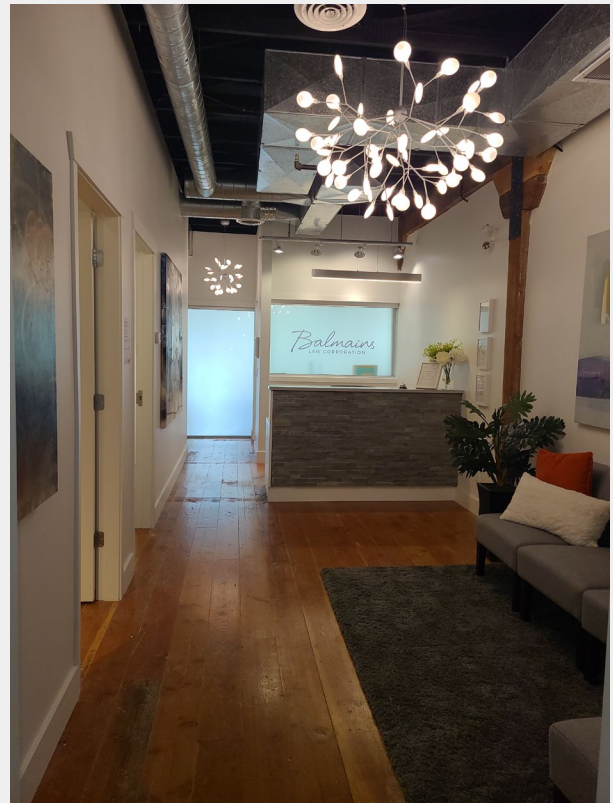


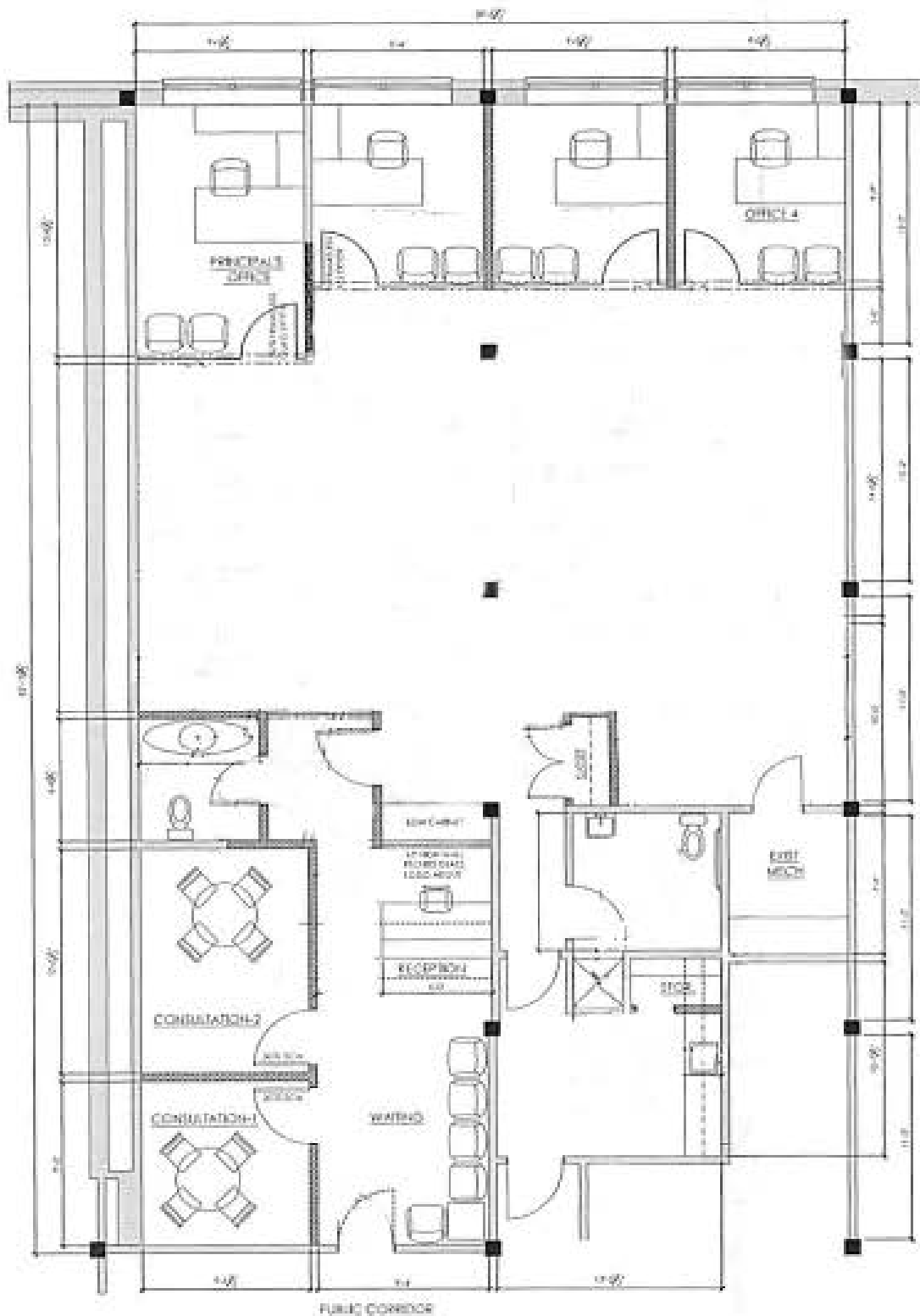
For more information:

Mike Geddes B.Comm.,PREC
250-878-6687 • mike.geddes@naiokanagan.ca

Tim Down, AACI, P.APP, CAE, RI
250-864 9140 • tim.down@shaw.ca

RE/MAX
Anchor Realty





FLOOR PLAN

SCALE 1/4"=1'-0"

(GROSS FLOOR AREA = 2,320 SQ. FT.)



Driving Distance to Major Cities from Property

Kelowna International Airport	14.4 KM
Vernon, BC	50.4 KM
Vancouver, BC	391 KM
Calgary, AB	707 KM
Edmonton, AB	971 KM

300 Square foot exclusive patio

