



Property Features

Nice bright clean office space with excellent street exposure to Leckie Rd. Ample On-site parking, bonus ~600sf mezzanine space, skylights, all within a very well managed and owner-occupied complex. Other Tenants include Next Level Performance, Great Way Martial Arts, Ballet Kelowna, d6 Print Studio and more.

Price: \$15.00 PSF

MLS: 10208010

For more information:

MIKE GEDDES PREC

+1 250 878 6687 • mike.geddes@naiokanagan.ca

219-1980 Cooper Road
Kelowna, BC V1Y 8K5
+1 250 868 1879

www.naiokanagan.ca



2253 Leckie Rd

This Leckie Rd space is very conveniently and centrally located in Kelowna. Just 1 block north of Hwy 97 near Orchard Park Mall off Dilworth Drive. Best value in office space in Kelowna.

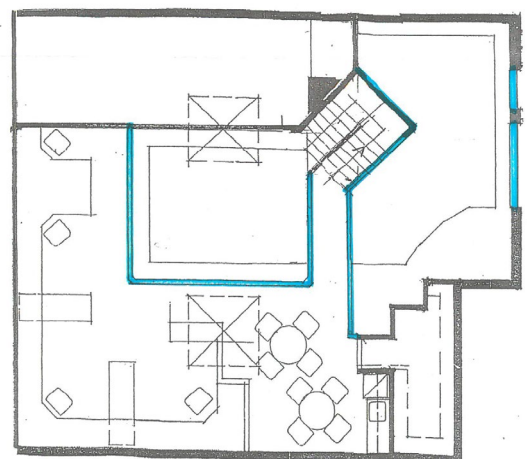
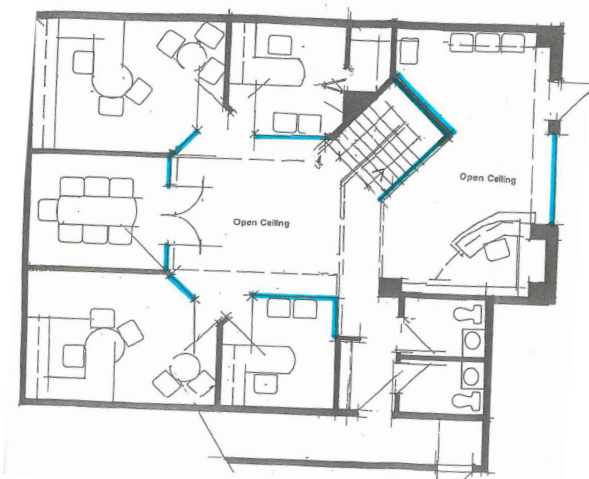
Price: \$15.00 PSF
MLS: 10208010

Property Details:

Size:
1,600 SF

Base Rent:
\$15/SF

Additional Rent:
\$4/SF



MIKE GEDDES PREC

mike.geddes@naiokanagan.ca

1980 Cooper Road Suite 219 Kelowna, BC V1Y 8K5 +1 250 878 6687

naiokanagan.ca